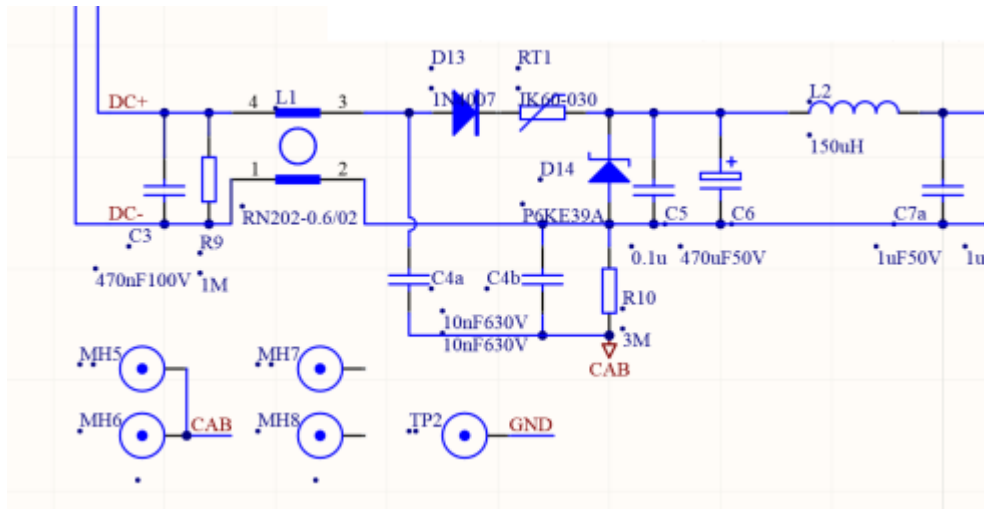


SDB IR300 02 Insulation too low

The IR 300 repeater has too low insulation between -24VDC and the ground.

This is caused by resistor R10 and applies to HW version < 1.8

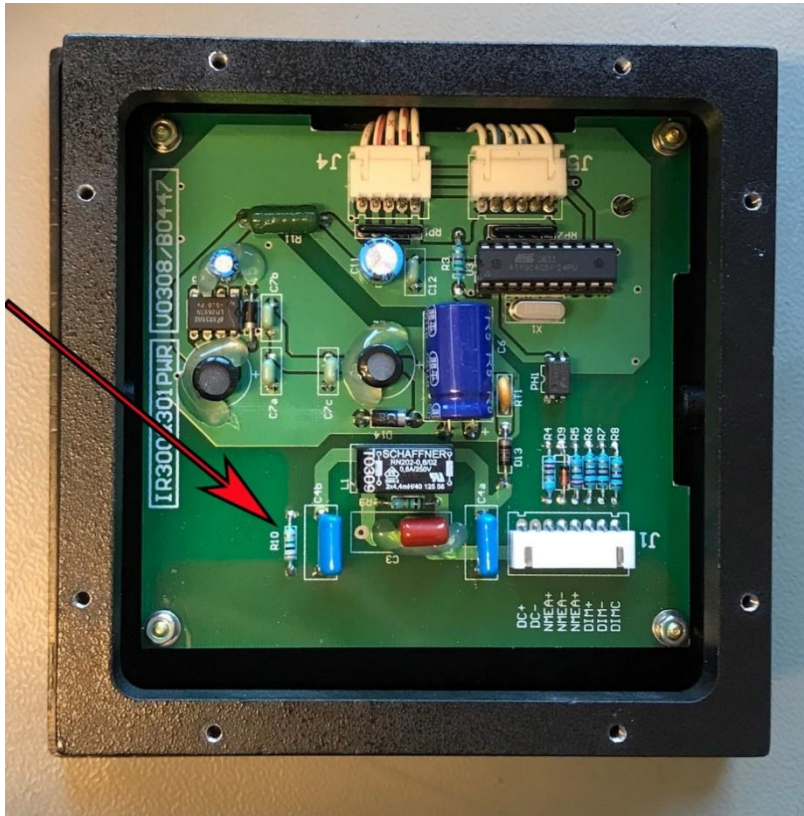


The low insulation problem can be solved by cutting away resistor R10.

Procedure:

- 1) Loosen the 8 screws/washers holding the backplate of the IR300
- 2) Take care when lifting the backplate and observe J1
- 3) Locate **R10** on the IR300&301PWR PCB as shown on Fig. 1 and cut away
- 4) Assemble back in reversed order making sure J1 is in place

Fig. 1



This completes the removal of R10.